

Soft Cab Enclosure Installation Instructions

For Kit #7151276

B
SER
8/05

7301468

Lull®

Estimated time to install this kit is 2 hours. Add 30 hours cure time for urethane sealer. Total 32 hours.

Vehicle Preparation

1. Park the vehicle on a firm, level surface where temperature will remain at or above 70° F (20°C). Allow time for the surface areas of the vehicle to reach the warmer temperature, if it's being brought indoors from a colder environment.
2. With the steering mode in four wheel steer, turn the wheels all the way to the right.
3. Raise the boom to approximately 40°.

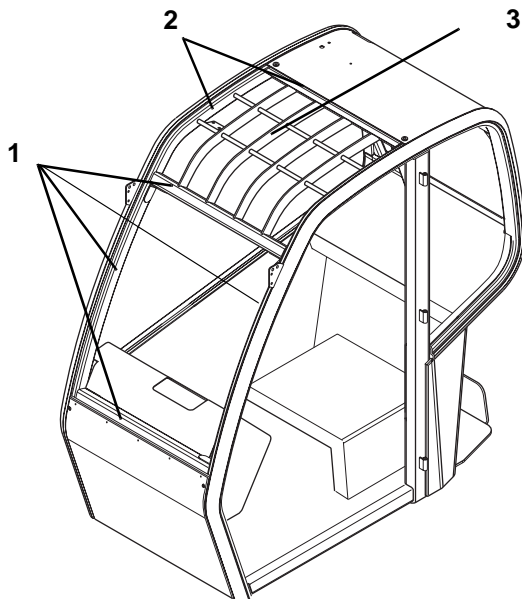


WARNING: **DO NOT** get under a raised boom unless the boom is blocked up. Always block the boom before doing any service work that requires the boom to be up.

4. Block up the boom securely.
5. Place the travel select lever in the (N) **NEUTRAL DETENT** position.
6. Engage the park brake switch and shut the engine OFF.

Windshield/Skylight Preparation

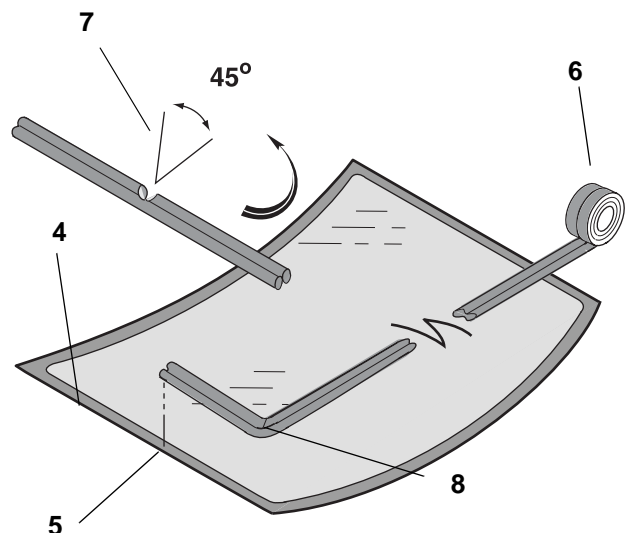
1. Use detergent soap and water, or an alcohol-based cleaner, to remove dirt and debris from window frame areas. Windshield (1) and skylight window (2) mating surfaces for adhesive-backed rubber seals, spacers, and urethane sealer need to be smooth, dry and free of oils, grease and dirt, before installation can begin.



IMPORTANT: **DO NOT** use ammonia-based glass cleaner on any of these painted surfaces. They leave behind a residue that attacks urethane sealer, which can cause premature separation and leaks.

Note: Once the skylight window glass is installed, cleaning directly behind it becomes very difficult. Clean the skylight grill area (3) if it's going to need cleaning, again, ever.

2. Using glass cleaner, clean the skylight glass and windshield. Allow glass to dry completely.
3. Lay out the front windshield and skylight window glass on a protective surface such as the bubble wrap packaging or cardboard in which it was shipped. The black border (4) on the glass should be facing up.
4. Start from the center of one of the short sides of the windshield, as shown (5). Apply adhesive-backed roll of bulb sealer (6) to the black border (4) all around the interior perimeter of the window glass. When going around corners, cut a v-shaped notch (approximately 45°) (7) out of the inside edge of the roll. This keeps the sealer flat as it bends around corners (8). The side of the window with the finished seal joint (5) is installed into the lower edge of the window frame opening, to reduce the chances of leaks into the cab.



SU0750

SU0710

5. Clean the lower windshield clip (1) and upper windshield plate (2) with the same non-ammonia cleaner used to clean cab window openings.

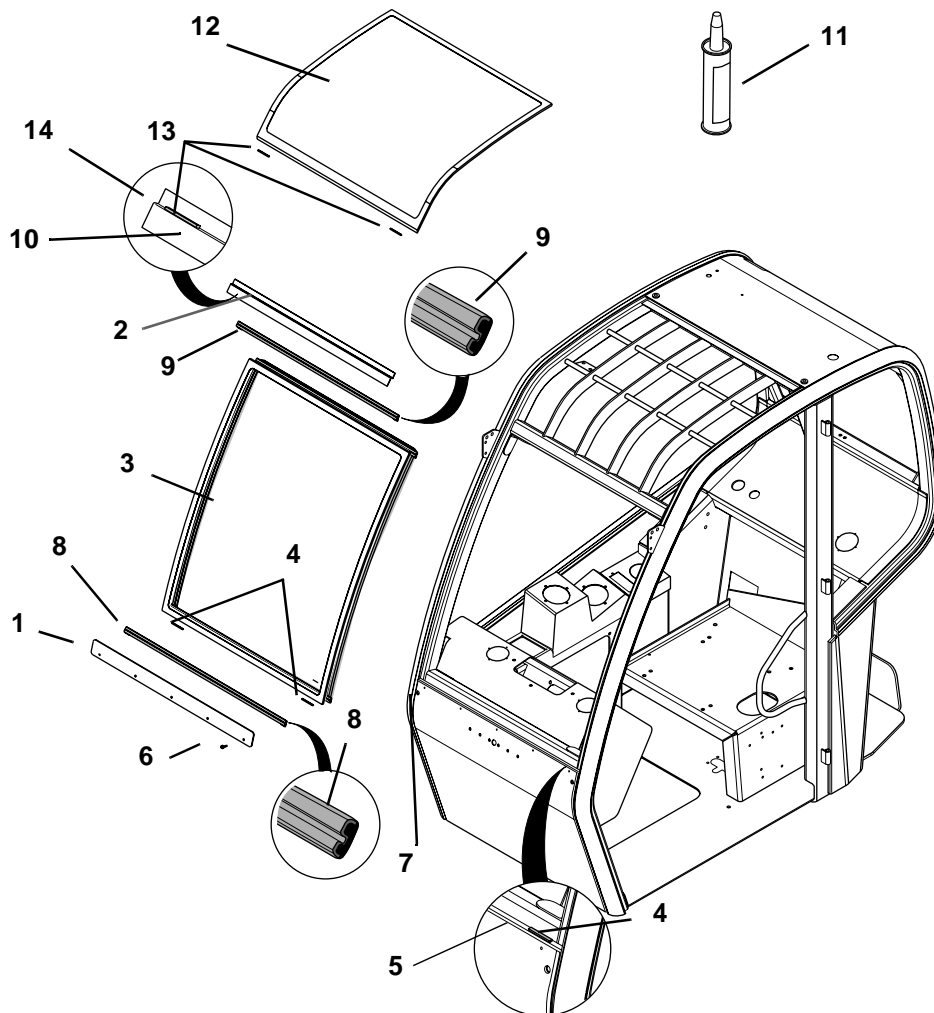
Front Windshield and Skylight Glass Installation

IMPORTANT: Direct contact between cab metal surfaces, and any window glass, must be prevented.

1. Protect the bottom edge of the windshield (3) by installing two adhesive spacer blocks (4) in the windshield ledge (5), 1" to 2" (25 to 50 mm) from corners.
2. Lift the front windshield glass (3) into position, resting evenly across both spacer blocks (4). Center the windshield glass inside the frame opening. There should be equal clearance between the right and left edges of the glass and the window opening.
3. Position the lower clip (1), but do not install screws (6). Align lower clip screw holes with those in the front of the cab (7). Apply a short strip of bulb sealer (8) to the lower front edge of the windshield glass. Center the bulb sealer (8) behind the lower windshield clip (1). Stick the adhesive side of bulb sealer strip (8) on glass.

4. Fasten the lower windshield clip (1) to the cab with five screws (6).
5. Momentarily position the upper windshield plate (2) in order to align the remaining short section of bulb sealer (9) and the top of the windshield glass (3). Stick bulb sealer adhesive side on the glass, taking care to center it against the overhanging part (10) of the upper plate (2).
6. Assemble urethane sealer (11) to suitable applicator. Cut 1" (25 mm) off the plastic tip. Cut a v-shaped notch into what remains of the tip.
7. Apply a thin, straight 3/16" (5 mm) wide bead of urethane sealer (11) to the front of the windshield cross-frame, to fasten the upper windshield plate (2) to the cab. Applying too much urethane sealer (11) may cause it to ooze out over the glass, or it may create too large a gap between the top of the window and the upper windshield plate (2).

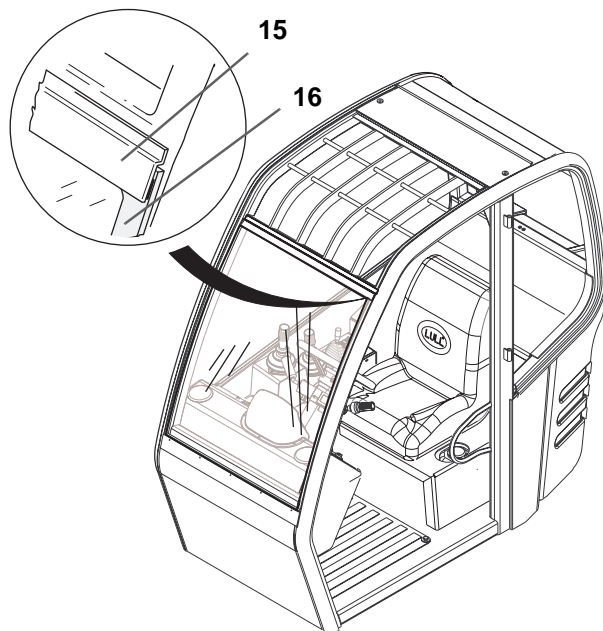
Hint: Running hot water over the tube of urethane, or immersing it in hot water, may help the urethane to flow more freely.



8. Position the upper plate (15) over the windshield and frame opening. Apply slight, even pressure. There should be a straight, even 1/8" (3 mm) gap above the windshield (16) between the upper plate and the glass. Clamp the upper plate firmly in place, compressing the bulb sealer (9) on the top of the windshield. Do not remove clamps for 24 hours.

9. Protect the bottom edge of the skylight window (12) by installing two adhesive spacer blocks (13) onto the folded edge (14) of the upper plate (2), 1" to 2" (25mm to 50 mm) from the ends.

IMPORTANT: Before continuing on with the skylight installation, allow urethane sealer to cure 4 to 6 hours. If the upper windshield plate (15) is knocked out of alignment before urethane has set up, installing the skylight window correctly becomes more difficult.



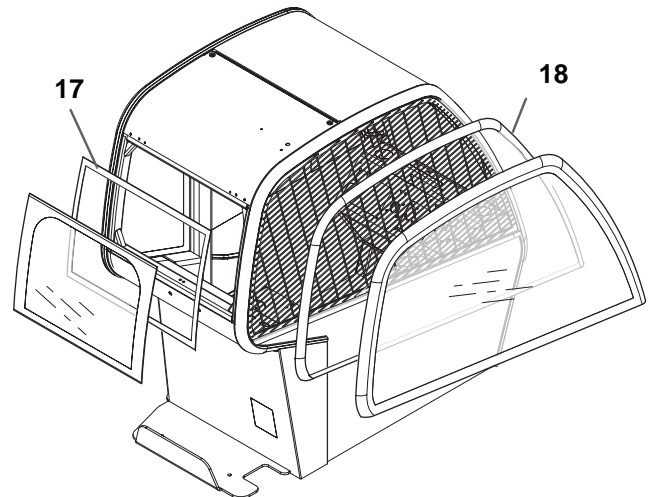
10. After allowing time for the upper windshield plate (15) to become tack free, apply a 3/8" (10 mm) bead of urethane sealer to the interior, black border area of the skylight window (12). Apply firm, even pressure all around the perimeter of the window to seat the glass and square it to the frame opening.

11. Allow 24 hours for urethane sealer (11) to cure before returning vehicle to service.

Vinyl Panel Installation

1. Use soap and water, or an alcohol-based cleaner, to clean cab surfaces where velcro strips (17 and 18) will be applied. Surfaces should be smooth, dry and free of oils, grease and dirt.
2. Allow surfaces to dry completely. **DO NOT** use an ammonia-based glass cleaner.
3. Apply velcro strips (17 and 18), only.

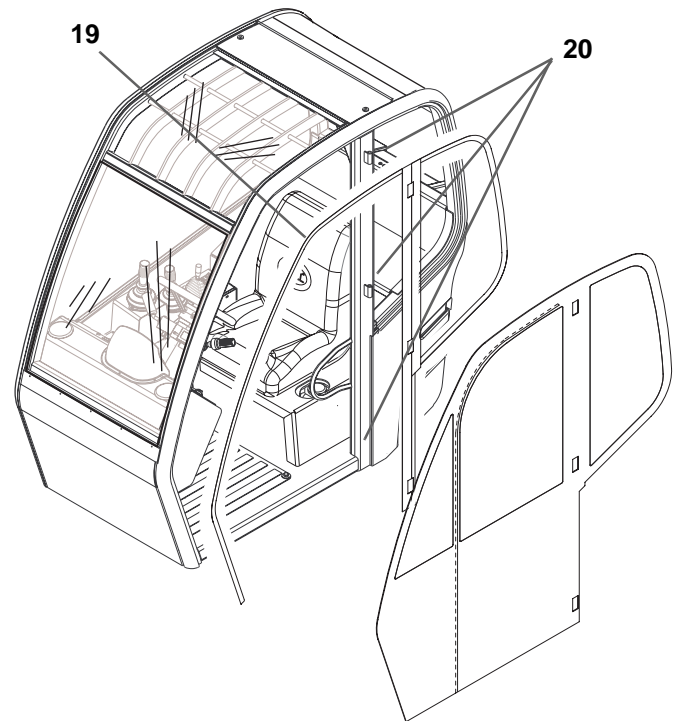
Note: Masking tape can be applied before velcro is attached to provide an on-cab template.



4. Repeat cleaning and surface preparation procedure on the door entry side of the cab.

5. Apply velcro strip (19) only.

6. Cut slits or notches in velcro strips to accommodate installation around hinges in the center pillar (20).



7. Remove any masking tape and residue adhesive that may have been used to apply velcro strips.

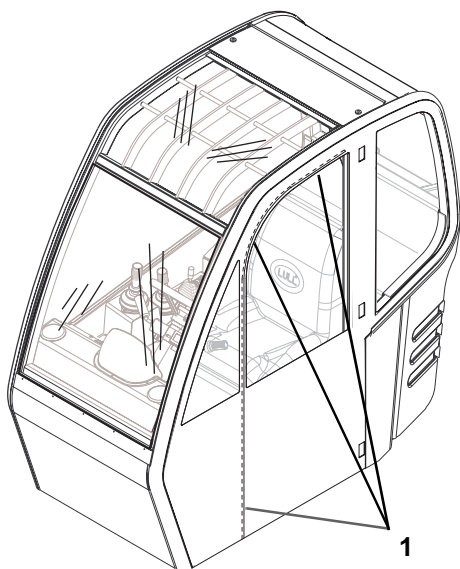
8. Connect outer vinyl sections, right side, rear and door entry, to the applied velcro strips.

Enclosure Care and Maintenance

1. When entering or leaving the cab, make sure the zipper (1) is open far enough to allow easy entry or egress. Constant tugging on the zipper, vinyl sections and velcro can cause damage to the enclosure, over time.
2. To prevent damage to vinyl windows, always use a soft, clean cotton cloth with warm water and mild soap for cleaning.
3. Rinse the entire enclosure to loosen and remove surface dirt, before cleaning windows.

IMPORTANT: Allow soap suds and warm water to do most of the work when cleaning windows. Clear vinyl windows can be scratched as even small dirt particles are being wiped away. Use very gentle sudsing motions.

4. Never use standard window cleaners or solvents, bleach or ammonia-based cleaners to clean any part of the enclosure.



CAUTION: **DO NOT** transport the vehicle with the enclosure attached. Wind gusts and resultant repeated tugging could damage the enclosure.